

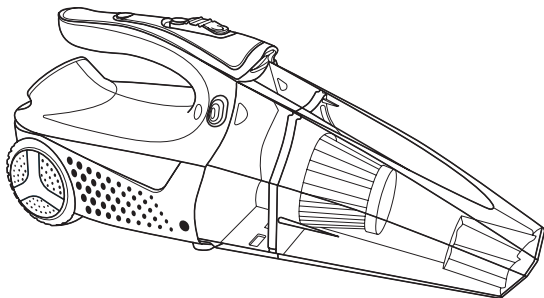
**Please, read this manual
carefully before use!**

Owner's Manual



Handheld vacuum cleaner with air compressor

KS VCP30





Thank you for opting for **Könner & Söhnen®** products. This manual contains a brief description of safety, setup and use. More information can be found on the official importer's website in the support section: **konner-sohnen.com/manuals**

You can also go to the support section and download the manual by scanning the QR code or on the website of the official importer of **Könner & Söhnen®** at **uk.konner-sohnen.com**



Please, read this manual carefully before use!

The manufacturer of **Könner & Söhnen®** products reserves the right to make changes that may not be reflected in this manual, namely:

- The manufacturer reserves the right to make changes in the product design, configuration and construction.
- The images and drawings in this manual are for reference only and may differ from the actual components and inscriptions on the products.

Contact information that you are free to use in case of any problems can be found at the end of this manual. All information in this manual is correct to the best of our knowledge and belief at the date of its publication. The current list of service centers can be found on the official importer's website at **uk.konner-sohnen.com**



ATTENTION - DANGER!



Failure to follow the recommendations marked with this sign may lead to serious injury of the operator or third parties.



IMPORTANT!



Useful information while operating the machine.

SAFETY INSTRUCTION

1



WARNING!



The manufacturer assumes no liability whatsoever for the repair of damaged goods and reimbursement for any losses caused by unauthorized dismantling.

1. This appliance is for household use only. Not for commercial or industrial use.
2. Do not use with damaged power cord or adaptor. If the appliance malfunctioned, dropped, damaged or dropped into water, send to the authorized service center.
3. Do not use without filter in place. Clean the filter before use,
4. Do not use to pick up flammable or combustible liquids such as petrol, or use in areas where they may be present.
5. Do not attempt to suck sharp objects that could damage the vacuum cleaner or the filter.
6. Do not pick up anything that is burning or smoking, such as cigarettes, matches or hot ashes.
7. The device must not be stored at temperatures exceeding 60 °C.
8. Never do anything that may cause mechanical damage to the device.
9. Do not disassemble or transform the product without authorization.

FEATURES

2

4 functions - Vacuum, Inflatable, Lighting and Tire Pressure Detection.

1. Inflatable and vacuum equipped with independent motors, so that products can better work its own functions.
2. The suction of the vacuum cleaner reached 3000 Pa, and the high power inflation.
3. The vacuum cleaner can be used on both dry and wet surfaces to quickly and easily remove dirt inside your vehicle. It is strictly prohibited to use in the rain. Especially to prevent the body from entering water, to avoid damage the body.
4. Accurate tire pressure gauge, remove safety hazards.
5. External LED light allows you to clean easily at night.

MAIN OVERVIEW

3

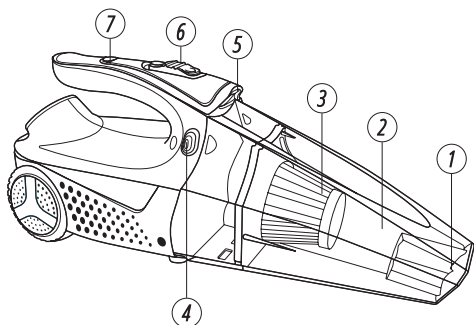


IMPORTANT!



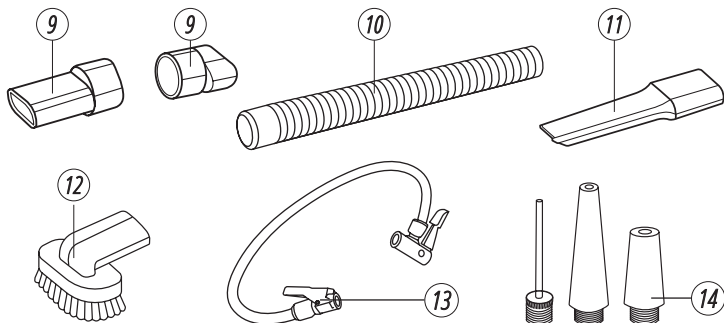
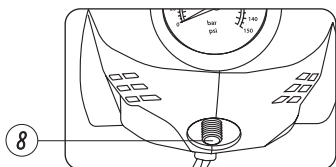
Manufacturer reserves the right to make changes and/or improvements in design, components set and technical attributes without notice and without incurring obligation. The pictures in this manual are schematical and may not match the parameters of original product.

1. Inlet port
2. Transparent dustbin
3. HEPA (high efficiency particulate air filter) filtration system
4. dustbin release button
5. LED light
6. Main power switch
7. LED light switch
8. Vent



THE PACKAGE INCLUDES:

9. Adapters (2 pcs.)
10. Corrugated hose
11. Narrow nozzle
12. Brush nozzle
13. Air compressor hose
14. Units of air adapter (3 pcs.)



Model	KS VCP30
Air flow	18 l/min
Max pressure	150 psi
Rated voltage	DC 12 V
Rated power	80 W
Rated current	6.7 A
Vacuum degree	3000 Pa
Filtration method	Paper HEPA filter
Dustbin volume	600 ml
Cable Length	3.5 m (with cigarette lighter plug)
Net dimensions (LxWxH)	35.4×11.6×13.5 cm
Net weight	1.2 kg
Accessories	2×Adapters, 1×Corrugated hose, 1×Narrow nozzle, 1×Brush nozzle, 1×Air compressor hose, 1×Units of air adapter

ON/OFF SWITCH

Push forward is vacuum function, push back is inflatable function, and turn to middle is OFF.
LED lighting is equipped with independent switch.



NOTE



Turn the car on, ensure that the car battery has sufficient electricity, and also that the product will not consume the battery power after the using and caused the car cannot start.

VACUUM:

Turn the car on and plugged it in to 12V DC power supply equipment, and push forward to turn on the vacuum.

1. Choose the appropriate suction nozzle to vacuum the dust.
2. Be careful not to exceed 1/3 of the volume of the dust cover to avoid jam.

INFLATABLE:

Attach one end of the air hose to the compressor outlet and move the latch to securely fasten it. Attach the other end of the air hose to the tire valve. Push the power switch back to start inflating the tire.



WARNING!



Warning! When pumping, the device heats up. Do not pump longer than 8 minutes. Let the device cool down for at least 5-10 minutes!

LED LIGHT:

Press the lighting switch button, the LED light turns on. Press it again, and the light turns off.

TIRE PRESSURE DETECTION:

When the tire pressure is measured, the power switch is turn off. The trachea tube insert into the tire valve and the another end connect with the product inflating interface. At this time, the barometer will show the pressure of the car tire. Please note that both ends of the gas locked to prevent the air leakage.

MAINTENANCE

6

1. Regularly clean the trash inside the dust box to prevent malfunction of the vacuum cleaner.
2. Please don't wipe the surface of the vacuum with petrol or oily matter, which should be cleaned with water or neutral detergent. And the cotton cloth should be wrung up when you wipe the product to keep water from the electronic component inside the vacuum cleaner.
3. In case of reduced suction power or after prolonged use, clean the dust container and the HEPA filter element of the vacuum cleaner regularly to ensure perfect cleaning results.
4. The electronic and mechanical part of this vacuum cleaner was factory sealed. Any attempt to tamper with the casing of the vacuum cleaner may cause damage to the vacuum cleaner.



WARNING!



Using filters without drying may damage the motor!

MAINTAINING THE HEPA FILTER:

The HEPA filter is a high-performance reusable filter element that requires gentle handling during operation and cleaning. Special care should be taken to ensure its structural integrity to prevent deformation and deterioration of its soft corrugated part. You can choose your preferred cleaning method from the listed below, but be sure to remove it from the vacuum cleaner before cleaning.

MECHANICAL DRY CLEANING:

- Remove dirt and dust on the outside using a new paint brush;
- Purge the inside with compressed air in the opposite direction of suction.

RINSING IN RUNNING WATER

- Carefully rinse the inside of the filter with plenty of clean running water so as not to deform the soft corrugated part, and let the filter dry completely before using it again.



EC Declaration of Conformity

Nr. 165

The following products have been tested by us with the listed standards and found in compliance with the European Community Electromagnetic compatibility Directive (EMC) 2014/30/EU.

Manufacturer: DIMAX INTERNATIONAL GmbH
Address: Flinger Broich 203, 40235 Duesseldorf, Germany
Product: Handheld vacuum cleaner with air compressor "Könner & Söhnen"
Type / Model: KS VCP30

The statement is based on a single evaluation of above mentioned products. It does not imply an assessment of the whole production and does not permit the use of the test lab. logo. The manufacturer should ensure that all product in series production are in conformity with the product sample detailed in this report. The applicant should hold the whole technical report at disposal of the competent all the right.

Applied EC Directives: 2014/30/EU Electromagnetic compatibility Directive (EMC)
2011/65/EU (ROHS) Directive and its Annex II amending
directive 2015/863/EU and amending Annex 2017/2102/EU

Applied Standards: EN IEC 55014-1:2021
EN IEC 55014-2:2021
EN IEC 61000-3-2: 2019 +A1:2021
EN 61000-3-3:2013+A1:2019
IEC 62321-4:2013+A1:2017
IEC 62321-5:2013
IEC 62321-6:2015
IEC 62321-7-1:2015
IEC 62321-7-2:2017
IEC 62321-8:2017



22

Issued Date: 2023-10-01
Place of issue: Duesseldorf
General director: Fomin P.

DIMAX
International
GmbH
Steuer-Nr: 103 5722 2493
UStIdNr: DE286173274

P. Fomin

We DIMAX INTERNATIONAL GmbH hereby declare that specified above conforms covering European Parliament and Council Directives, Electromagnetic compatibility Directive (EMC) 2014/30/EU of 26 February 2014. The CE mark above can be used under the responsibility of manufacturer. After completion of an EC declaration of Conformity and compliance with all relevant EC directives.

CONTACTS

Deutschland:

DIMAX International GmbH Flinger
Broich 203 -FortunaPark- 40235
Düsseldorf, Deutschland

www.koenner-soehnen.com

Ihre Bestellungen

orders@dimaxgroup.de

**Kundendienst, technische Fragen und
Unterstützung**

support@dimaxgroup.de

Garantie, Reparatur und Service

service@dimaxgroup.de

Sonstiges

info@dimaxgroup.de

The United Kingdom:

Innovation Trade Ltd.,
63/66 Hatton Garden Fifth Floor,
Suite 23, London, EC1N 8LE

info.uk@dimaxgroup.de

Technical support

support.uk@dimaxgroup.de

Polska:

DIMAX International
Poland Sp.z o.o.

Polska, Warczawska,
306B 05-082 Stare Babice,
info.pl@dimaxgroup.de

Україна:

ТОВ «Техно Трейд КС»,
вул. Електротехнічна 47,
02222, м. Київ, Україна
sales@ks-power.com.ua